



Hollymatic.

HOT·N·COLD™

MULTI-ZONE TEMPERATURE
DATA MONITORING SYSTEM

Remote Viewer Manual

600 E. Plainfield Rd.,
Countryside, IL 60525
Phone: (708) 579-3700
Fax: (708) 579-1057

Website: www.hollymatic.com
Email: hollyinfor@hollymatic.com

Copyright © 2003-2004 DDB Data Systems Inc.

Table of Contents

Introduction	4
Software Installation	5
System Configuration	7
Enter in File Location Manually	7
Browsing to the File Location	8
Remote Viewer Screen	9
Monitoring Reports	10
Notice	11

Rev. 2.5.0

Introduction

Welcome to the [Hot-N-Cold Remote Viewer](#):

This software was designed for companies who wish to view the current settings and temperatures of the [Hot-N-Cold Data Monitoring](#) PC from a networked PC. As long as your systems administrator has connected the Data Logger to the network, then any one of the other PCs connected to the same LAN can also view the temperatures.

Once you have the software installed on a workstation you will need to setup the location of the PC controlling the data logger and its files. If you are not familiar with file locations and networking, please consult your systems administrator for assistance. If the location is not setup properly, then the viewer application will not run.

Please note that the [Hot-N-Cold Remote Viewer](#) software is only an interface to the data logger software and is meant only to view the last temperatures read. The data logger PC is the only one that will ever control the [Hot-N-Cold Data Monitoring](#) software.

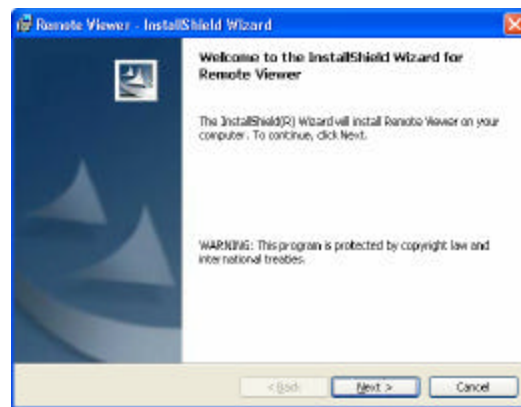
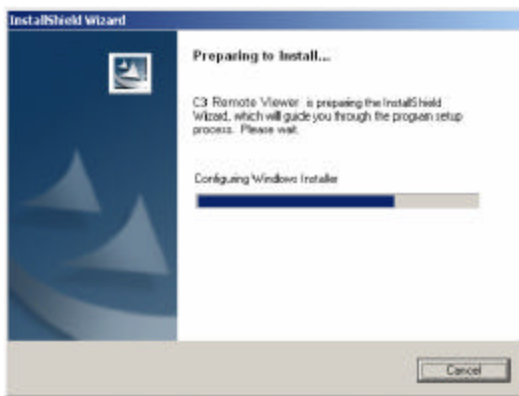
At startup the program will automatically position itself in the upper right hand corner of the screen. You have the ability of moving the display anywhere and minimizing it to the taskbar.

Along with the current temperature readings, you will also have access to the same information reports as on the data logger PC.

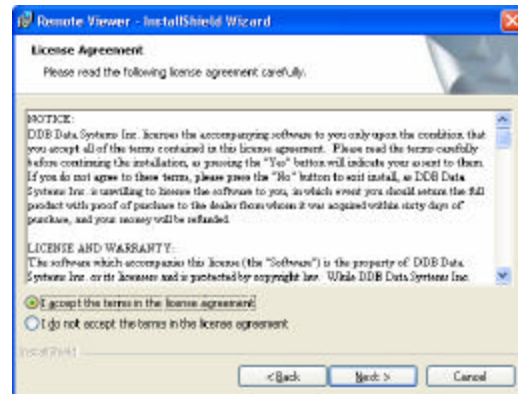
Software Installation

The first step in getting the **Hot-N-Cold Remote Viewer** up and going is to first install the software. Please insert CD into the CD Rom. The installation should automatically begin, if not then you must start it manually by clicking on **Start** and **Run**. In the text box type in **X:\Setup** where **X** is the drive letter corresponding to the CD Rom Drive.

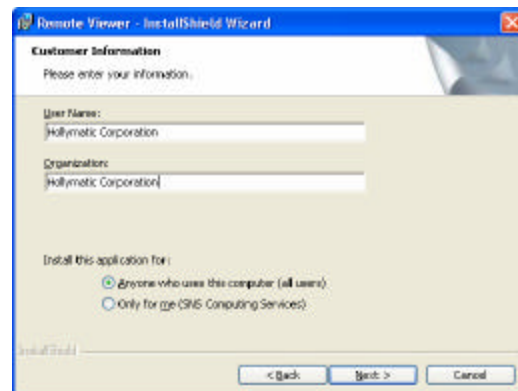
Once executed the following screens will appear. The user must accept the Welcome introduction by clicking on the next button.



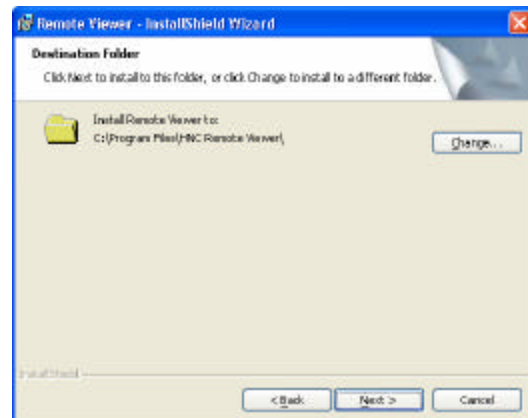
Please read the License agreement and select I Agree if you fully understand and agree with the terms and conditions.



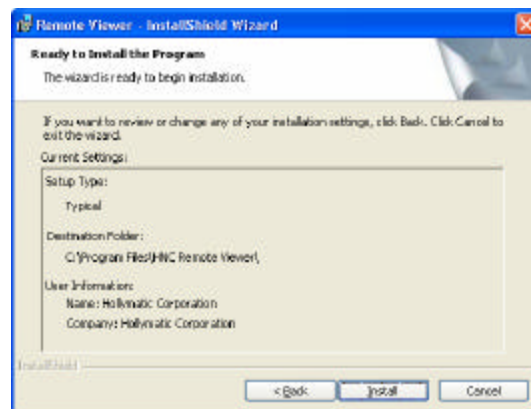
Please enter in the user name and company in the following fields. It is recommended that you check off the "Anyone who uses this computer (all users)" option, so that the program will be always be available on this PC.



It is always recommended that you select the default location.



Make sure that you have successfully completed all the previous entries. Once you click on the **Install** button, all data will be written to the registry.



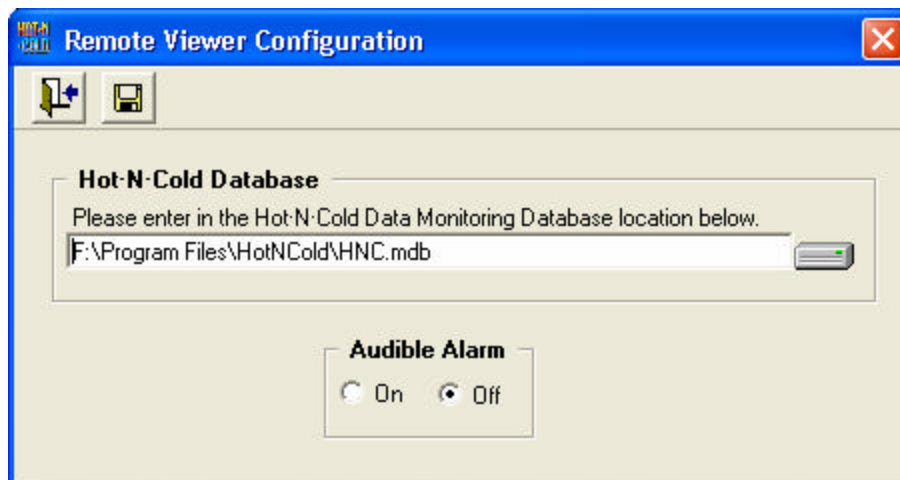
System Configuration

When you first execute the **Hot-N-Cold Remote Viewer**, a windows will appear asking for the location of the Database. This file contains the data stored from the **Hot-N-Cold Data Logger** Software.

You can either type in the entire location as seen below or click on the drive icon which will bring the windows navigation screen.

Enter in File Location Manually:

If you choose to enter in the location manually please take note at the special characters such as "\\". If you have a mapped drive setup to the Data Logger PC, then you can placed the mapped drive letter in its place. Again please consult with your network administrator for assistance.



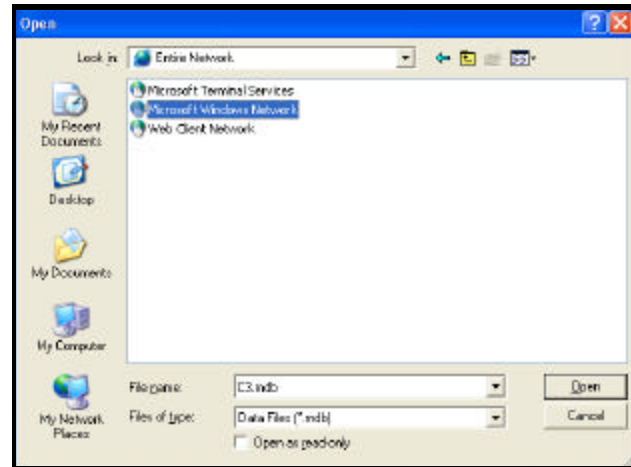
Please note that if something were to disrupt the connection between the Data Logger PC and the Remote Viewer(s) such as a computer malfunction or network problem, the Remote Viewer will not be able to function.



Browsing to the File Location:

For those individuals that are not quite familiar with file locations and mapped drives, you can click on the drive icon and using the mouse, browse to the installed location and select the Data Logger Database.

From the Open box as shown you can scroll to the location very easily by clicking on the drop down box on the top. A list will appear showing all the local and network drives and connections. By clicking on any one of the selections the computer will then expand it and show its contents.



Once you have scrolled to the location of the Data Logger PC containing the C3 Database, you will see a screen such as the one below. Please click on the **C3.mdb** file once and the **Open** button on the bottom right hand corner of the screen.

When all is completed, click on the **Save** button to record these settings and **Exit** this module. The **Hot-N-Cold Remote Viewer** will now appear.

Remote Viewer Screen

The Remote Viewer Screen, as seen below, will list all the current monitoring zones setup on the Data Logger PC. Remember that information here will always be pulled from the main PC as long as there is a constant connection over the network.

Currently the refresh rate of the viewer screen is 10 minutes with audible alarms. We know that loud noise coming from the computer speakers can be very annoying at times so you have the option of disabling it.



	Zone Name	°C
Cold	1 Walk in Freezer	-12
	2 Retail Counter	3
	3 Retail Freezer	4
	4 R.T.E. Cooler	-7
	5 Sandwich Counter	3
Hot	1 Sausage Smoke House	6
	2 Pork Steak Smoker	9

File: Brings up the System Configuration Screen

Reports: Similar to the Data Monitoring Software, you can view the several reports supplied.

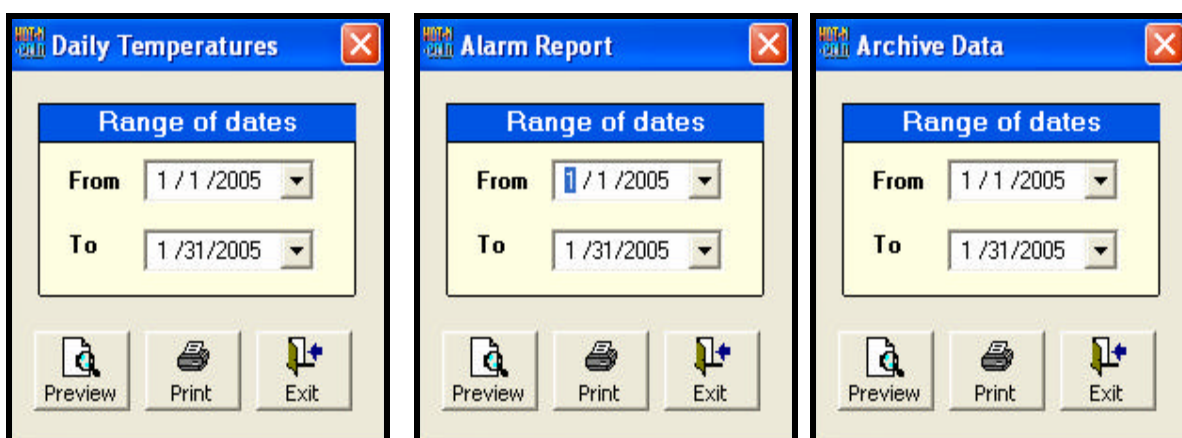
Batch Reports: Similar to the HotNCold Cook Cycle Reports. Here you can view the two types of reports supplied.

About: Display information about the author of the software

Monitoring Reports

Hot-N-Cold Data Logger offers three different reports to the user. The first one is the Daily Temperature Report which will include all data logged within the date range specified. The second report, the Alarm Report, will list all alarms within the date range specified. The third report, Archive, includes all data that has been previously archived within the date range specified.

The user can either view the reports on the screen or print them.



NOTICE:

Hollymatic Corporation licenses the accompanying software to you only upon the condition that you accept all of the terms contained in this license agreement. Please read the terms carefully before continuing the installation, as pressing the "Yes" button will indicate your assent to them. If you do not agree to these terms, please press the "No" button to exit install, as Hollymatic Corporation is unwilling to license the software to you, in which event you should return the full product with proof of purchase to the dealer from whom it was acquired within sixty days of purchase, and your money will be refunded.

LICENSE AND WARRANTY:

The software which accompanies this license (the "Software") is the property of Hollymatic Corporation or its licensors and is protected by copyright law. While Hollymatic Corporation continues to own the Software, you will have certain rights to use the Software after your acceptance of this license. Except as may be modified by a license addendum which accompanies this license, your rights and obligations with respect to the use of this Software are as follows:

YOU MAY:

- (i) use only one copy of the Software on a single computer;
- (ii) make one copy of the Software for archival purposes, or copy the software onto the hard disk of your computer and retain the original for archival purposes;
- (iii) use the Software on a network, provided that you have a licensed copy of the Software for each computer that can access the Software over that network;
- (iv) after written notice to Hollymatic Corporation, transfer the Software on a permanent basis to another person or entity, provided that you retain no copies of the Software and the transferee agrees to the terms of this agreement; and
- (v) if a single person uses the computer on which the Software is installed at least 80% of the time, then after returning the completed product registration card which accompanies the Software, that person may also use the Software on a single home computer.

YOU MAY NOT:

- (i) copy the documentation which accompanies the Software;
- (ii) sublicense, rent or lease any portion of the Software;
- (iii) reverse engineer, decompile, disassemble, modify, translate, make any attempt to discover the source code of the Software, or create derivative works from the Software; or
- (iv) use a previous version or copy of the Software after you have received a disk replacement set or an upgraded version as a replacement of the prior version, unless you donate a previous version of an upgraded version to a charity of your choice, and such charity agrees in writing that it will be the sole end user of the product, and that it will abide by the terms of this agreement. Unless you so donate a previous version of an upgraded version, upon upgrading the Software, all copies of the prior version must be destroyed.

LIMITED WARRANTY:

Hollymatic Corporation warrants that the media on which the Software is distributed will be free from defects for a period of sixty (60) days from the date of delivery of the Software to you. Your sole remedy in the event of a breach of this warranty will be that Hollymatic Corporation will, at its option, replace any defective media returned to Hollymatic Corporation within the warranty period or refund the money you paid for the Software. Hollymatic Corporation does not warrant that the Software will meet your requirements or that operation of the Software will be uninterrupted or that the Software will be error-free.

The above warranty is exclusive and in lieu of all other warranties, whether express or implied, including the implied warranties of merchantability, fitness for a particular purpose and non-infringement. This warranty gives you specific legal rights. You may have other rights, which vary from state to state.

DISCLAIMER OF DAMAGES:

Regardless of whether any remedy set forth herein fails of its essential purpose, in no event will Hollymatic Corporation be liable to you for any special, consequential, indirect or similar damages, including any lost profits or lost data arising out of the use or inability to use the software even if Hollymatic Corporation has been advised of the possibility of such damages.

The program was designed to enhance your current temperature data logging system. The Hot-N-Cold Data Monitoring software which allows for remote alarm notification should not be used as your only source of equipment failure notification. Should the Hot-N-Cold Data Monitoring system fail for any reason, you must return to manually recording temperatures in all your zones until repairs have been completed.

Some states do not allow the limitation or exclusion of liability for incidental or consequential damages so the above limitation or exclusion may not apply to you.

In no case shall Hollymatic Corporation's liability exceed the purchase price for the software. The disclaimers and limitations set forth above will apply regardless of whether you accept the Software.

If you do not understand any part of this disclaimer or manual, you should contact your supplier immediately.

GENERAL:

This Agreement will be governed by the laws of the province of Ontario. This Agreement may only be modified by a license addendum which accompanies this license or by a written document which has been signed by both you and Hollymatic Corporation.

Should you have any questions concerning this Agreement, or if you desire to contact Hollymatic Corporation for any reason, please write: Hollymatic Corporation Services, 4 Nicholas St., Leamington, ON N8H 3R8.